



VT Record Six User Guide



Table of Contents.

Get in touch with us	3
Extracting footage from your hard drive	4
MDVR software	5
Integrate and enhance - Safety systems which connect with your DVR and improve safety	6 - 7
Live Support Packages - VT Connect	8
Managed service packages	9
Vehicle Safety Inspection	10



This guide requires the **VT Record 6** software. Scan the QR code to download software or visit: www.vision-techniques.com/record-6-software

Get in touch with us.

If you recently purchased a VT Record 6 and would like to activate the SIM card for live remote connectivity, please call us on the number below so we can configure your connection.

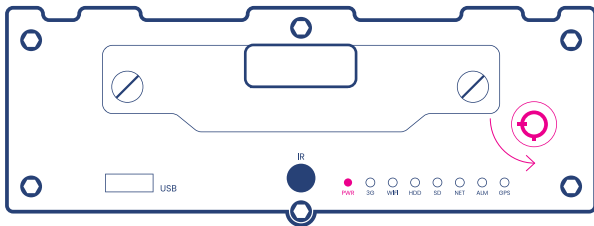
If you are struggling with a technical problem or need assistance with your VT Record 6, please get in touch with our customer service team on the details below.

Phone: 01254 679 717

Email: info@vision-techniques.com

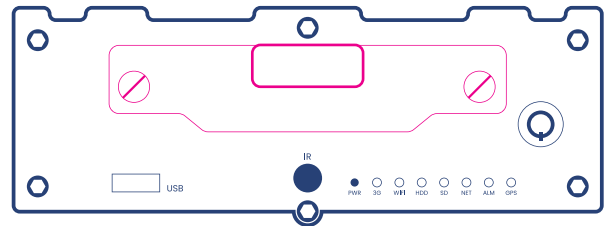
DVR Hardware.

Steps for removal and re-assembling the VT Record 6 for footage extraction.



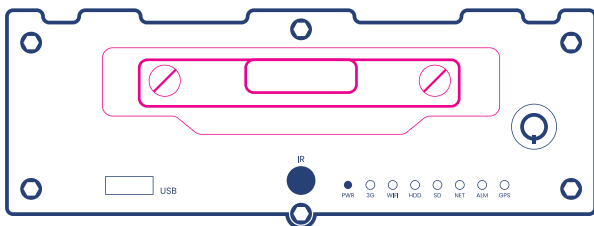
Step 1:

Ensure the DVR is fully powered down by turning the DVR key to the OFF/UNLOCK position and waiting for all the lights to go out, apart from the power light.



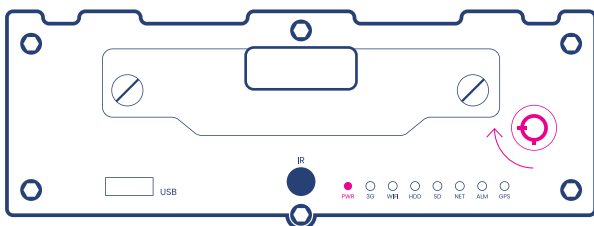
Step 2:

Loosen the thumb screws highlighted above and pull to remove the faceplate.



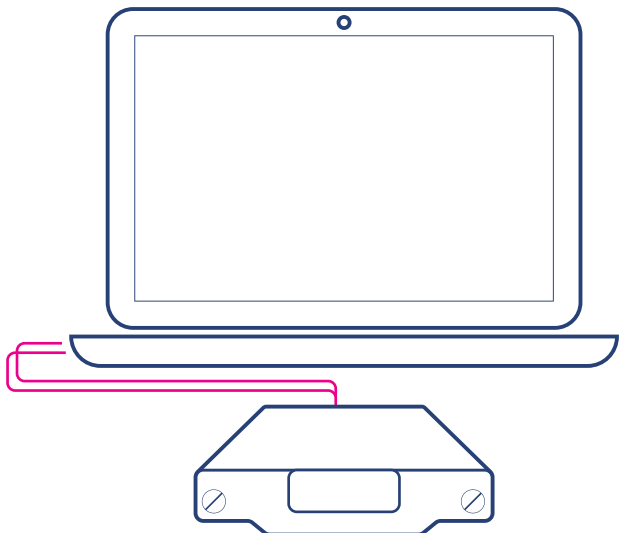
Step 3:

Loosen the inside thumb screws and remove the hard drive.



Step 5: Re-assembling the Drive

Once you have finished extracting footage, add the drive back into the cradle. When putting the hard drive back into the cradle push past the first point of resistance until it clicks into place. Tighten the inside thumb screws back into place, replace the faceplate, turn the outside thumb screws to tighten. Turn the key to the "ON/LOCK" position, as shown above. Check the HDD light is flashing on the front of the recorder.

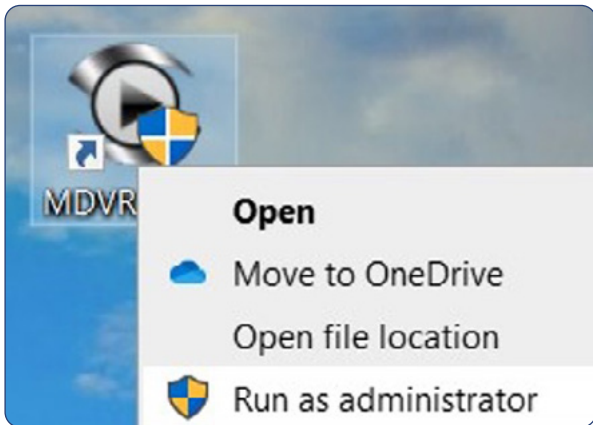


Step 4: Attaching the drive to your computer

Plug the drive into the laptop as shown in the image, ensuring both USBs are plugged into the PC. Now follow the steps for extracting footage with the MDVR software.

MDVR Software.

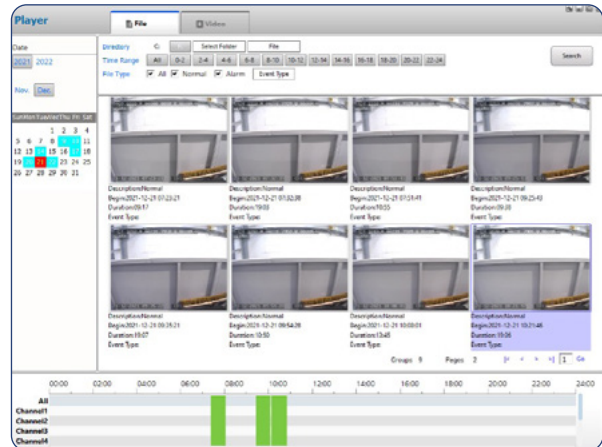
Steps to opening, finding and extracting footage with MDVR software.



Step 1.

Opening the MDVR software

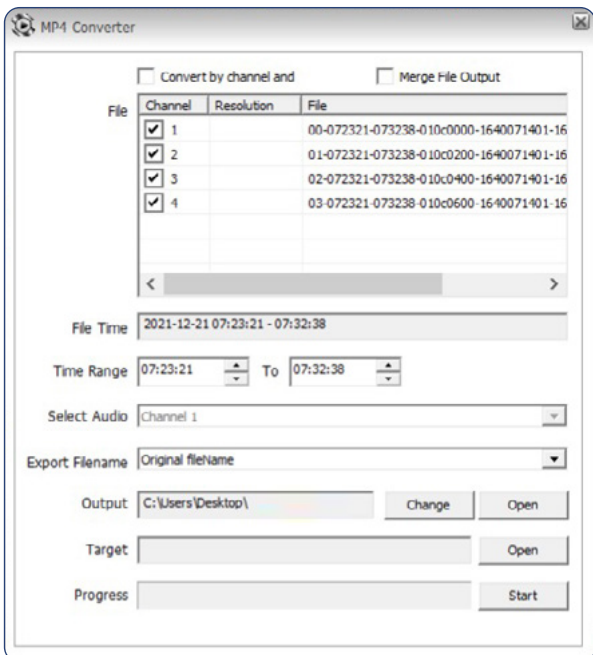
MDVR player needs to be run with appropriate UAC privileges to enable access to the data partition, this is for security purposes ensuring only authorised personnel have access.



Step 2.

Finding Footage

1. Select the drive from the directory
2. Navigate with the day, month and year filters



Step 3.

Extracting Footage

To extract, click on the MP4 button

Set your criteria of which channels (cameras) you require

Specify the time range

In the 'output' section set where you wish for the extracted footage to be saved.

Integrate and enhance.

Safety systems which connect with your DVR and improve safety.

VT Banksman Auto Braking



VT Banksman Auto Braking not only detects moving or stationary objects with 100% accuracy but will also apply the brakes should the driver be distracted or unable to respond to the in-cab visual and audible alarms bringing the vehicle to a controlled stop.



Scan the QR code or visit:

www.vision-techniques.com/product/vt-banksman-auto-braking-radar/

VT StopSafe



VT StopSafe allows the crew to react quickly to an emergency, allowing them to bring the vehicle to a controlled stop should the driver become incapacitated.



Scan the QR code or visit:

www.vision-techniques.com/product/vt-stopsafe/

VT Solar

Innovate your waste management fleet with VT Solar.



VT Solar is used to power all onboard ancillary equipment, allowing for a reduced requirement from the vehicle's alternator.

A powerful step towards a greener future, VT Solar cuts fuel usage, reduces CO2 emissions & prolongs battery life – saving the end-user money.



Scan the QR code or visit:

www.vision-techniques.com/product/vt-solar/

BrakeSafe

BrakeSafe is our fail-safe automatic braking system.



Should the driver exit the cab without applying the vehicle park brake, BrakeSafe automatically does so on their behalf, eliminating the risk of a vehicle runaway.



Scan the QR code or visit:

www.vision-techniques.com/product/brakesafe-system/

VT Ident Plus

Vehicle security and anti-rollaway system.



The system prevents theft or injury caused by the untrained and unauthorised use of dangerous onboard equipment which prevents unauthorised users from driving the vehicle with the added benefit of anti-rollaway.



Scan the QR code or visit:

www.vision-techniques.com/product/ident-plus-system/

Live Support Packages.

Safety systems which connect with Record 6 to improve safety and efficiency.

VT Connect

One of the biggest expenses of any fleet is fuel, by combining video & GPS data with data from the vehicles CAN network, telematics devices can tell if the vehicle is being driven efficiently.



Scan the QR code or visit:

www.vision-techniques.com/product/vt-connect/



VT Connect can help by monitoring the driving performance of each driver giving you tangible reports to help you identify additional training requirements or introduce driver best practices.

Features:

- Fleet management and analysis
- Mapping – with real-time traffic information and a geo-zoning function
- Footage review and download
- Overview dashboard for fleet operations and KPIs
- Driver behaviour
- Reporting
- iOS & Android applications

Managed service packages

We offer a range of services to fit our customers needs.

Get in touch with the customer service team to discuss your requirements.

Phone: 01254 679 717

Email: info@vision-techniques.com

Vision Techniques Managed Service is designed to make CCTV footage access easier, faster and more efficient – without the need for physical access to your system.

Our Remote CCTV Footage Download Service allows you to request recorded footage from compatible devices. We handle the retrieval on your behalf – securely and remotely.

OPTION ONE - Pay As You Go

This covers an up to 15 minute continuous segment for up to four cameras.

Contact us directly on 01254 679717 for pricing.

OPTION TWO - Monthly Subscription *

This requires a minimum tariff of 1GB per vehicle per month to qualify.

This includes:

- Live remote camera viewing access
- From two download service requests per vehicle per year
- Requests can be pooled across fleets e.g. 12 vehicles = 24 requests annually
- Monthly health exception report highlighting suspected camera faults, hard drive issues, devices offline for 5+ days
- Remote training and login setup

* Monthly Subscription is from £17 per vehicle per month (Minimum two year contract)



Vehicle Safety Inspection.

Vehicle safety checks save lives.

When you choose Vision Techniques to provide your vehicles with equipment, your safety is our priority.

We are passionate about safety and take pride in the quality and reliability of our solutions.

Our Safety Equipment Inspection packages will provide you with less fleet downtime and reduced costs from unscheduled repairs.

All your Vision Techniques safety equipment installed on the vehicle will be inspected and checked by a qualified engineer.

Any repairs (if necessary) that can be carried out within the allocated time on site will be done, otherwise, findings will be reported along with actions and costings to resolve.

The cost for this package is £75 per vehicle per 12 month inspection - based on a minimum of 3 vehic

Terms and conditions

Any repairs or replacement parts required that are outside of the existing equipment warranty period will be subject to additional costs. Same day repairs are subject to stock availability.

Safety Inspection Packages do not extend or prolong the existing equipment warranty that the vehicle holds. Extended warranties are available.

All prices quoted are subject to VAT at the prevailing rate.

Please note that engineer appointments and installation dates are booked in advance via email.

Failure to present the correct vehicle at the scheduled time, without 48 hour prior notice will be subject to additional costs to re-attend.

